

Oregon Stroke Network

Fifth Annual Conference

Welcome

Faculty - Thursday

- Amy Miner Ross
- Susie Fisher
- Karen Ellmers
- Sandy Dancer

Faculty - Friday

- Ray Englander - Emcee
- Linda Brown
- John Moorhead
- Nick Okon
- Elaine Skalabrin
- Ritu Sahni
- Lisa Yanase

Conference Coordination Team

- Thank you & Kudos to:
 - Symposium Planning Chair
 - Nancy Simonson
 - Infrastructure
 - Susie Fisher & Amy Ross & Shirley Dambrauckas & Danna Hastings, Jen Hammond
 - Grants & Vendors
 - Erin Shaw
 - Sponsors

OSN Partner Sponsors



Vendors

- AirLink Critical Care Transport
- American Stroke Association
- Boehringer Ingelheim USA Corp.
- Bristol-Myers Squibb
- EKR Therapeutics
- Genentech
- Integra Lifesciences
- InTouch Health
- Legacy Health System
- The Medicines Co.
- OHSU School of Nursing
- Penumbra, Inc.
- Progressive Rehabilitation Associates
- Providence Brain & Spine Institute
- Sacred Heart Medical Center – River Bend
- Toshiba

OSN: Vision

To deliver the right care at the right time in the right place

15 partners listed & we encourage more to join

- We want to see all the critical access hospitals represented
- We want to see all EMS represented by district/county
- We want to see all Fire/Rescue represented

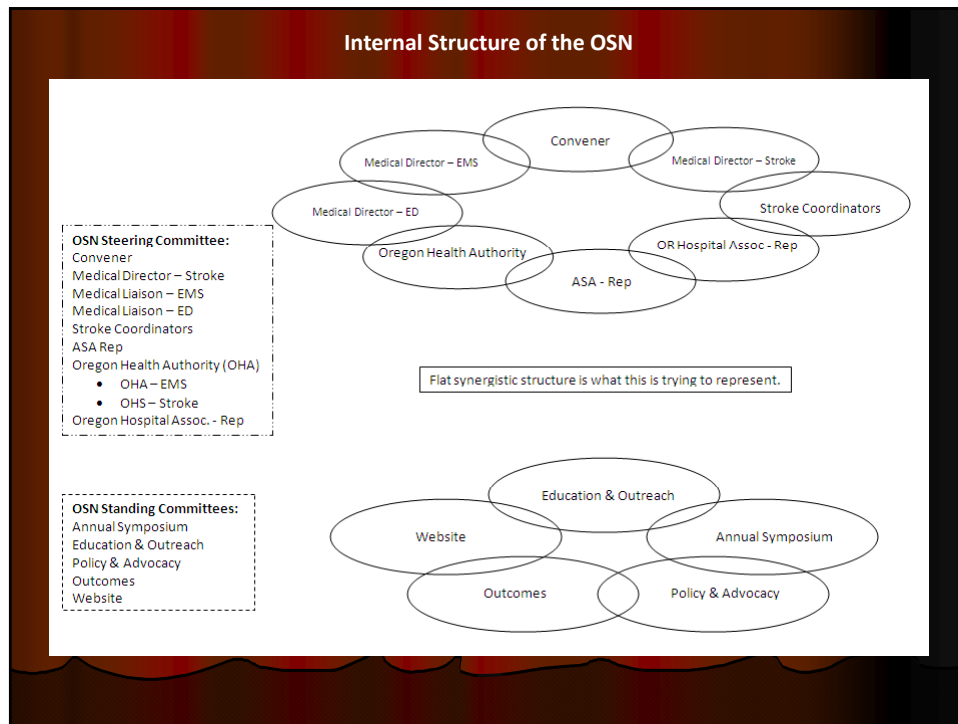
We cannot do this without YOU!

Members

- American Stroke Association
- Rogue Valley Medical Center, Medford, Oregon
- Three Rivers Community Hospital, Grants Pass, Oregon
- Legacy Health, Portland Oregon
- Oregon EMS and Trauma System
- Oregon Health & Science University, Portland Oregon -OHSU Stroke Center
- Oregon Health & Science University-Office of Rural Health
- Oregon Health & Science University- School of Nursing
- Oregon Heart Disease and Stroke Prevention Program
- Providence Stroke Center
- Providence St. Vincent Medical Center, Portland Oregon
- Providence Portland Medical Center, Portland Oregon
- Providence Medford Medical Center, Medford, Oregon
- Sacred Heart Medical Center at RiverBend, Springfield, Oregon
- St. Charles Health System, Bend, Oregon Stroke Program

Oregon Stroke Network Organizational Structure





- ## OSN People
- | | |
|---|--|
| <p>Steering Committee</p> <ul style="list-style-type: none"> ● Medical Director – Stroke <ul style="list-style-type: none"> ● Ray Englander ● Medical Liaison – EMS <ul style="list-style-type: none"> ● Ritu Sahni ● Medical Liaison – ED <ul style="list-style-type: none"> ● Needs to be filled ● Stroke Coordinators <ul style="list-style-type: none"> ● Cascade Stroke group ● American Stroke Association <ul style="list-style-type: none"> ● Erin Shaw ● Oregon Health Authority (OHA) <ul style="list-style-type: none"> ● Danna Hastings & Ritu Shani ● Oregon Heart Disease & Stroke Prevention Program ● Oregon Hospital Association <ul style="list-style-type: none"> ● Diane Waldo ● Convener <ul style="list-style-type: none"> ● Amy Ross | <p>Committees</p> <ul style="list-style-type: none"> ● Annual Symposium <ul style="list-style-type: none"> ● Nancy Simonson ● Education & Outreach <ul style="list-style-type: none"> ● Susie Fisher ● Policy & Advocacy <ul style="list-style-type: none"> ● Ritu Sahni, Stephanie Tama-Sweet ● Outcomes <ul style="list-style-type: none"> ● Karen Ellmers & Paul Rostykus ● Website <ul style="list-style-type: none"> ● Amy Ross |
|---|--|

Goals

- Provider Outreach
 - Symposium & Networking for Stroke Providers
- Statewide Presence
 - Website, Symposium & Collaboration
 - Office of Rural Health, Oregon Health Authority, American Stroke Association & Department of Human Services
- Coordination of Care Delivery
 - Availability of Protocols, Public Education on Website
- Outcomes Monitoring & Improvement
 - OSN Members coordinate with Regional Groups related to early recognition, transport & triage
- Advocacy & Policy
 - Support of SB 234 to create Stroke Council & infrastructure similar to the Trauma System

Value Example

Megan McPhetridge
St. Charles Medical Center



www.oregonstrokenetwork.org

Professional Practice Page
login: osnpartner
password: Ucare4stroke