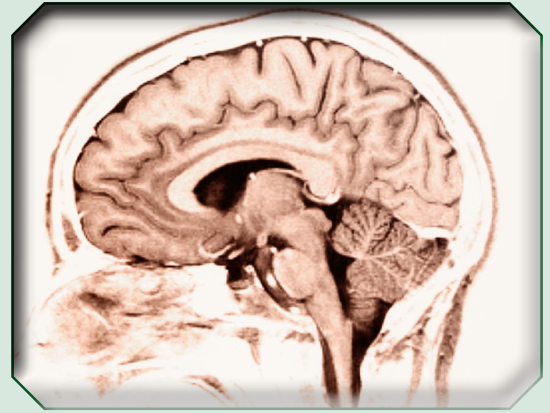


# JOIN US FOR THE 2nd Annual Stroke Seminar

Tuesday, March 29, 2011

7am-4:30pm (Includes Continental Breakfast and Lunch)

A collaboration between OHSU Stroke Center and  
PCC's CLIMB for Health Professionals!



## Guest speakers from OHSU

**Stanley L. Barnwell, M.D., Ph.D.**



Endovascular Interventions  
for Acute Stroke



**Wayne Clark, M.D.**  
Stroke Update: Time is Brain



**Johnny Delashaw Jr., M.D.**  
Identification & Management of SAH



OREGON  
**HEALTH & SCIENCE**  
UNIVERSITY

Other topics include:

- Acute Stroke Care: Role of EMS in the greater Portland area
- Identification & Management of ICH
- Pharmacology: Neuro-specific Medications *with Jerusha Taylor, PharmD*
- Inpatient Management of the Acute Stroke Patient
- Primary & Comprehensive Stroke Centers; Use of Telemedicine in Stroke Care *with Karen Ellmers, RN, MS, CCNS*

This seminar will be of particular interest to nurses, paramedics, physicians, respiratory therapists, rehabilitation professionals, and pharmacists from the Emergency Department, Intensive Care, Acute Care or Progressive Care Units, and Emergency Medical Services.

Location of Seminar:

PCC's CLIMB Center for Advancement  
1626 SE Water Ave., Portland OR 97214

Tuition: Early rate registration begins March 9 - \$109 CRN: 27998

Tuition: Regular rate begins March 20 - \$129 CRN: 28001  
8 contact hours

Visit [www.pcc.edu/climb/health](http://www.pcc.edu/climb/health) to register or call 971-722-8888

**CLIMB**  **Portland  
Community  
College**  
for  
**Health Professionals**